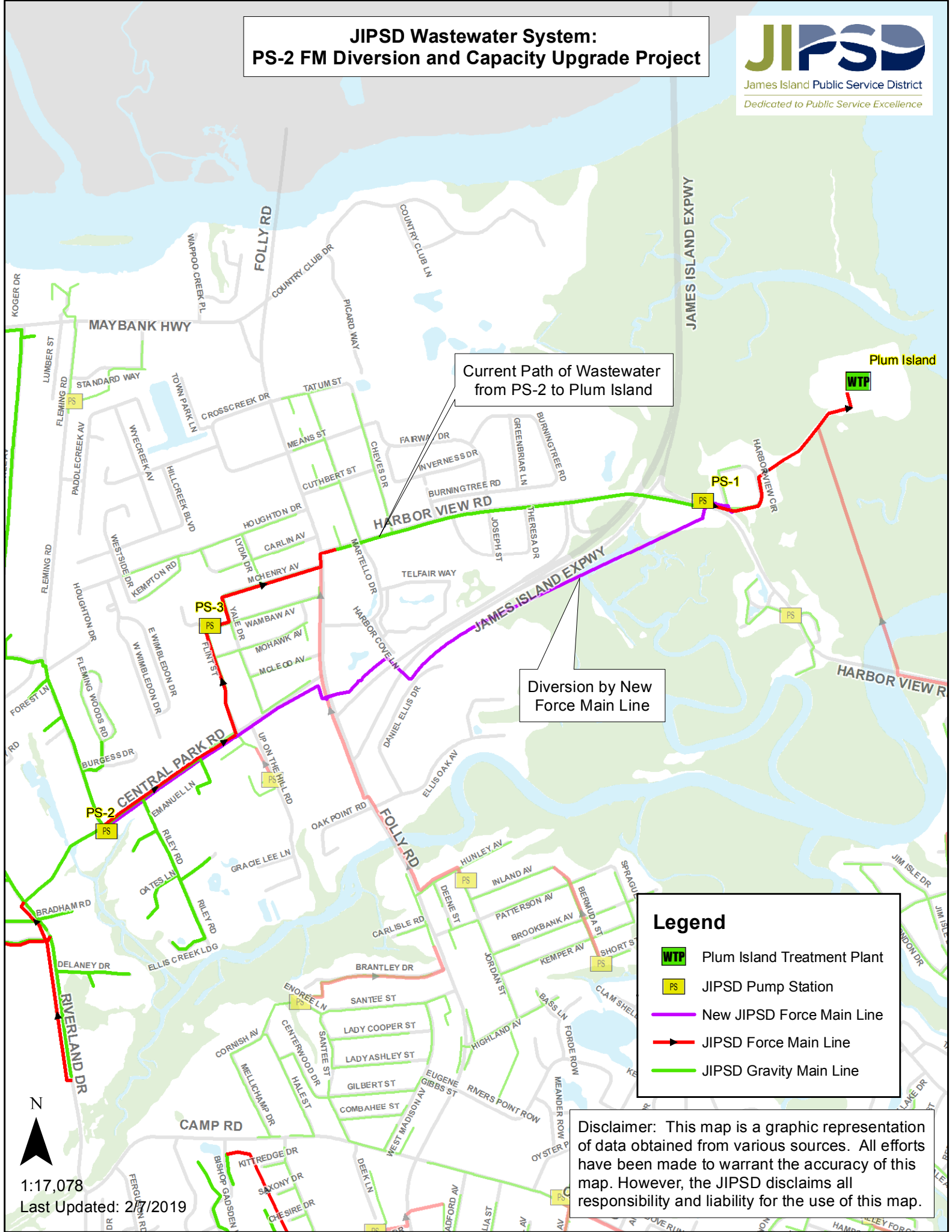


JIPSD Wastewater System: PS-2 FM Diversion and Capacity Upgrade Project



James Island Public Service District
Dedicated to Public Service Excellence



Current Path of Wastewater from PS-2 to Plum Island

Diversion by New Force Main Line

Legend

- Plum Island Treatment Plant
- JIPSD Pump Station
- New JIPSD Force Main Line
- JIPSD Force Main Line
- JIPSD Gravity Main Line

Disclaimer: This map is a graphic representation of data obtained from various sources. All efforts have been made to warrant the accuracy of this map. However, the JIPSD disclaims all responsibility and liability for the use of this map.

N
1:17,078
Last Updated: 2/7/2019