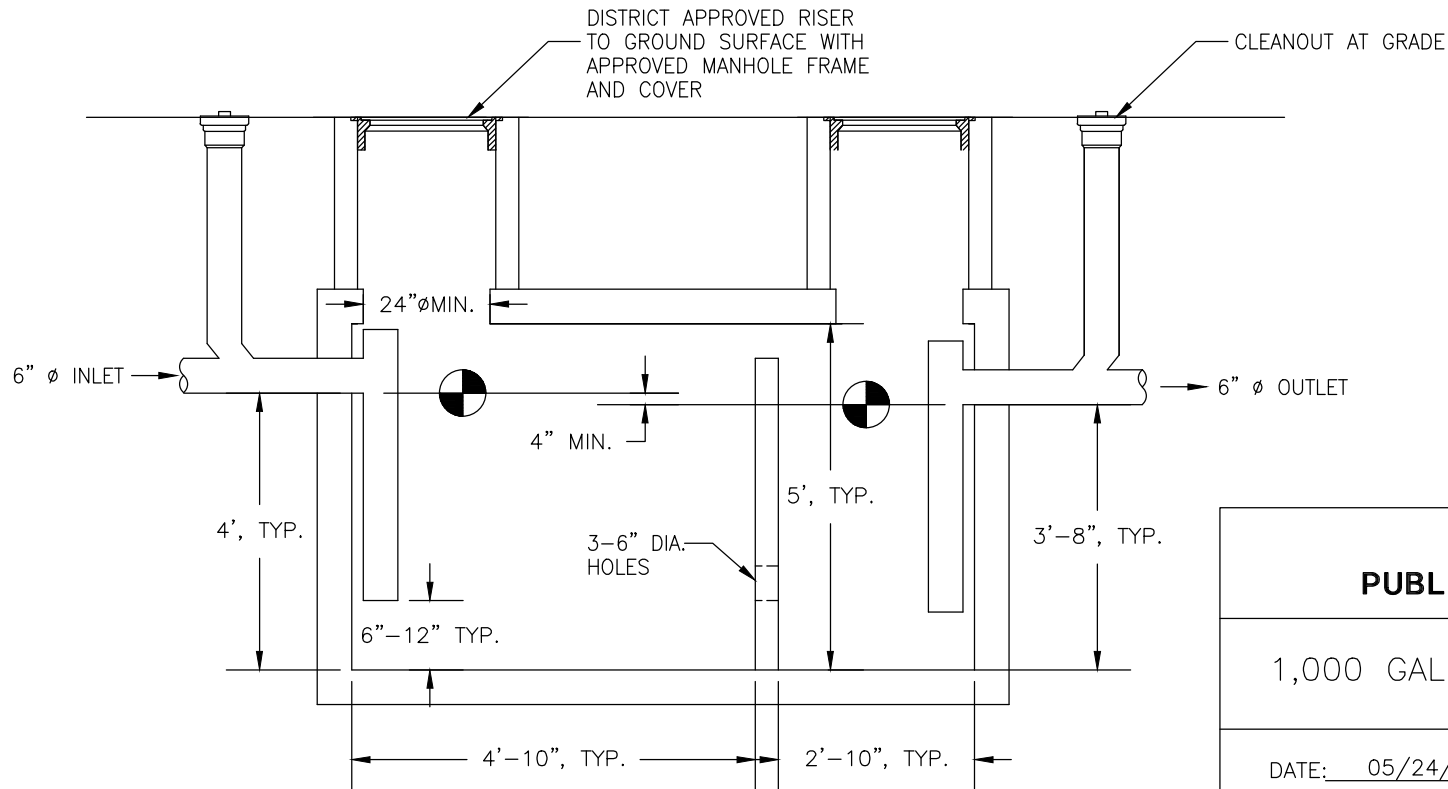


NOTICE:

1. SEE DISTRICT STANDARDS SECTIONS 15 FOR ADDITIONAL REQUIREMENTS.
2. GREASE TRAP MATERIALS, CONSTRUCTION , AND INSTALLATION SHALL ALSO BE IN ACCORDANCE WITH APPLICABLE SCDHEC AND LOCAL PLUMBING CODE REQUIREMENTS.

DISTRICT APPROVED
4,000 PSI CONCRETE
PRECAST GREASE TRAP
STRUCTURE



**JAMES ISLAND
PUBLIC SERVICE DISTRICT**

1,000 GALLON GREASE TRAP

DRAWING:

26

DATE: 05/24/16

DRAWN BY: GRC & ASSOC., INC

SCALE: NTS

APPROVED BY: DJH